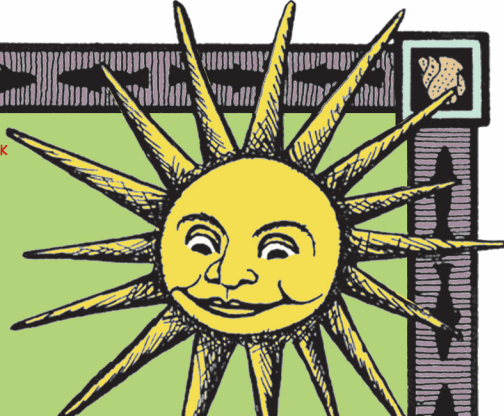


YACHTS



SMELT SANDS STATE PARK
 P ♿ ♻️ ♻️ ♻️

YACHTS STATE PARK
 P ♿ ♻️ ♻️ ♻️

YACHTS OCEAN ROAD STATE PARK
 P ♿ ♻️ ♻️ ♻️

CAPE PERPETUA SCENIC AREA 7
 2 MILES SOUTH OF YACHTS
 P ♿ ♻️ ♻️ ♻️



Amanda's Statue



POINTS OF INTEREST

- A** City Hall/Yachats Commons
- B** Yachats Community Park
- C** Library (WiFi)
- D** Little Log Church & Museum
- E** Post Office
- F** Whale Park
- G** Tidepool Viewing Deck
- H** Beach Access (Check tide tables)
- NM PA** North Marine Protected Area
 N Yachats to Cape Perpetua | Map at VC & Online

AREA TRAILS & PATHS

- (See map for trail rating & length)
- 1** 804 Trail/Oregon Coast Trail
 - 2** Gerdemann Botanic Preserve Public Footpath Dogs not allowed
 - 3** Ya'Xaik Trail
 - 4** Prospect Trail
 - 5** Wetland Boardwalk & Urban Forest Paths
 - 6** Amanda's Trail
 - 7** Cape Perpetua Scenic Area & Trails
 26 miles of interconnecting trails
 - Other Popular Walking Routes

US 101 MILEPOST MARKERS

- Yaquina Head Lighthouse 137.6
- Downtown Newport/JCT Hwy 20 140.0
- Yaquina Bay Lighthouse 141.9
- Hatfield Marine Science Center 142.3
- Oregon Coast Aquarium 142.3
- South Beach State Park/Camping 143.4
- Ona Beach/Beaver Creek SNA 149.0
- Seal Rock State Park 150.9
- Driftwood Beach State Park 153.2
- Downtown Waldport/JCT Hwy 34 156
- Patterson State Park 157.1
- Beachside State Park/Camping 159.3
- Tillicum Beach/FS Camping 160.5
- YACHTS 164**
- Devil's Churn 166.5
- Cape Perpetua Overlook/Camping 166.7
- Cape Perpetua Visitors Center 166.9
- Cook's Chasm Viewpoint/Thor's Well 167.2
- Neptune State Scenic Viewpoint 168.5
- Strawberry Hill State Park 169.4
- Stonefield Beach State Park 171.5
- Ponsler State Park 175.4
- Washburn State Park/Camping 176
- Hobbit & Valley Trailheads 177.3
- Heceta Head Lighthouse 178.3
- Sea Lion Caves 179.3
- Alder Dune FS Camping 183.6
- Darlingtonia Botanical Wayside 185.2
- Downtown Florence/JCT Hwy 126 190.0
- Oldtown Florence 190.6
- Honeyman State Park/Camping 193.4
- Oregon Dunes Overlook 200.8

Stop by to pick up a Visitor's Packet and ask us about special events, seasonal tours and interpretive programs.

YACHTS VISITORS CENTER
 541-547-3530, 800-929-0477
 YACHTS.ORG

